



***Enterprise job scheduling and workload automation re-invented for the modern data center.***

## **Introducing Automation Center by OpsWise**

### **Single Solution for the Enterprise**

OpsWise Automation Center offers the latest innovations in functional design, architecture, implementation, and compliance - all incorporated organically throughout its feature set rather than using separately developed add-ons sold for an additional license fee.

OpsWise Automation Center not only provides the time-and-date scheduling of an enterprise job scheduler, it is a workload automation broker capable of meeting the needs of real-time enterprises.

OpsWise Automation Center is truly native to all platforms - not just separate, platform-specific "integrated" schedulers. The core server and agents can run on Windows, UNIX, and Linux operating systems and as a native z/OS application. It's up to you how you want to set up your environment.

How you choose to implement the software is not dictated by software restrictions. This seamless integration reduces complexity, minimizes errors and vastly improves your ability to access comprehensive visualizations of your data and workflows. In short, OpsWise Automation Center is the last scheduler you'll ever need.



### **Pure Web Interface**

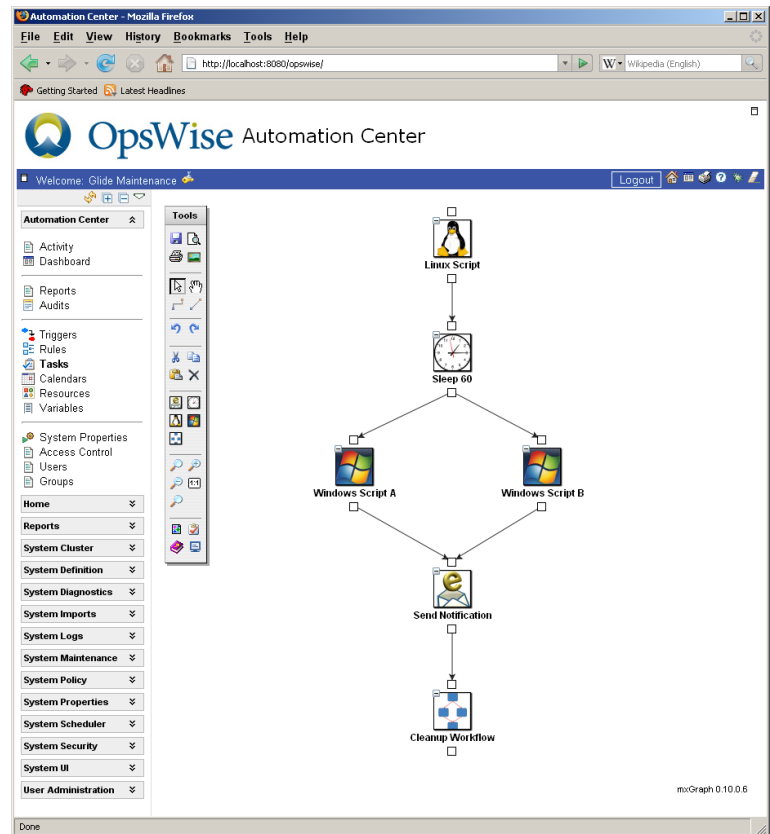
The OpsWise Automation Center user interface has been developed with an intuitive design that leverages the latest Web 2.0 technologies.

The system is accessible anywhere using the most popular browsers. One hundred percent of user and administrative functions can be performed via the web interface. There are no obscure command lines to learn or unwieldy desktop installs to perform.

## Define Business Process via Graphical Workflow

A central component of OpsWise Automation Center is the integrated drag-and-drop workflow definition tool. This feature allows you to define workflows that closely model your business processes. While working within the workflow module, you can import existing task definitions or create new tasks on the fly. You can develop simple or complex workflows and zoom in or out to view the details or overview as required.

When the workflow kicks off, you can monitor its activity in a table view or graphically or both. You can create your own activity displays, specifying which activity you want selected and what details should be included. Like the workflow itself, the activity display is completely customizable.

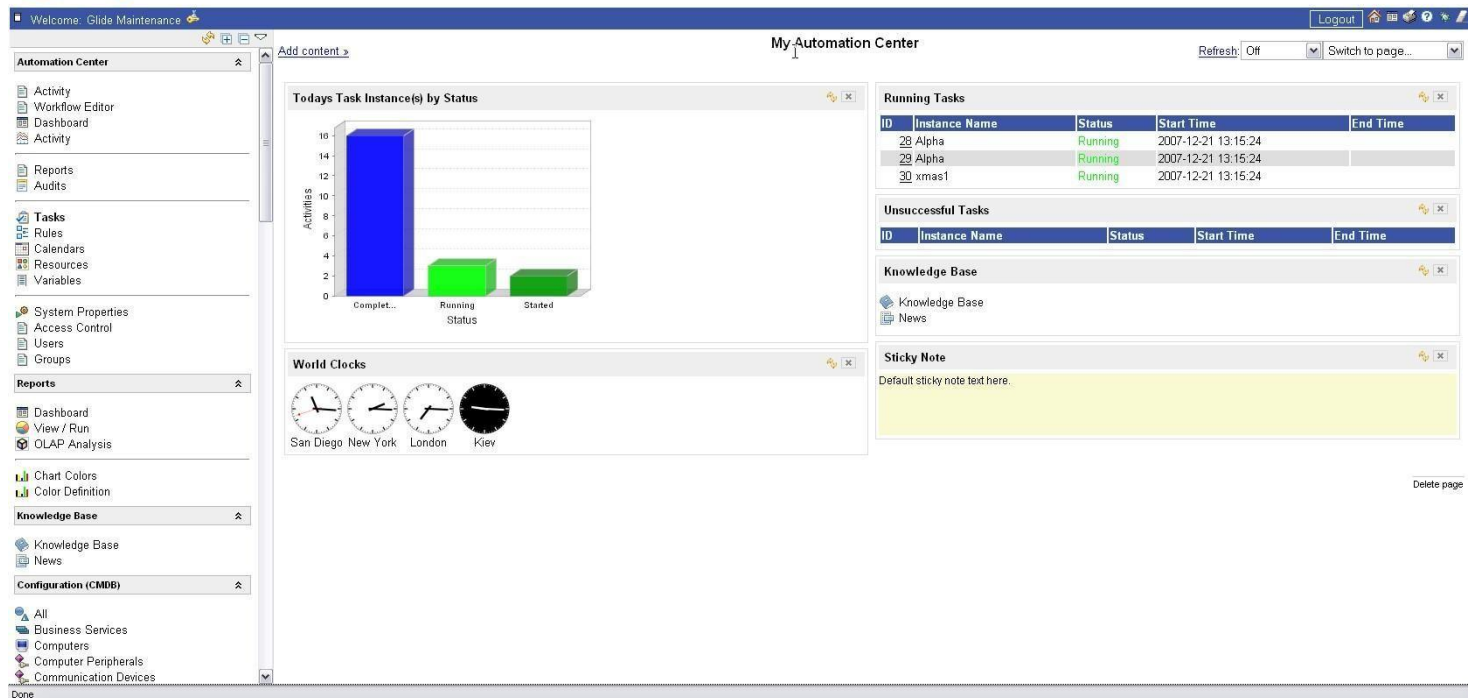


## Dashboards, Reporting, & Customizations

The OpsWise Automation Center user interface gives you complete flexibility in defining custom home pages for each user. Home pages can include user-specific tasks and reports, for example, as well as graphical widgets that display real-time views of a particular running workload.

The user interface can be customized to fit your business requirements. Administrators can create customized action buttons, forms, fields, and tables that extend the solution's capabilities. For example, you could implement an action button that flags a record as approved and saves it to the database. You could then modify your navigation pane to display approved and unapproved records under separate menu options.

For reporting, the Automation Center provides a built-in report generator. You can use existing reports or create your own workload reports. These can be displayed in the user interface, printed out, or exported as PDF, Excel, or XML-formatted files.



## Business View Alignment

The OpsWise product includes a built-in configuration management database (CMDB) that auto-discovers the topology of your enterprise. This feature helps business users define the business services and the enterprise resources that they require. Business users can also monitor their own workloads based on their own business service view. They can even create their own automated dashboards for monitoring workload specific to business services.

## Auto-Deployment and Auto-Discovery

OpsWise Automation Center includes an impressive array of automated enterprise management features. At the click of a mouse, OpsWise auto-discovers your network and applications. It provides you with a list of servers available for deployment. The system can auto-deploy agents across the enterprise and automatically update existing agents. The system also provides a graphical display of agent status.

## Clustering for Fault Tolerance and High Availability

Beyond simple high availability, system administrators can set up clusters of two or more nodes for fault tolerance, load balancing, and unprecedented scalability.



## Manage Dynamic Workload

OpsWise provides hooks into operating system performance that allow administrators to load balance based on the real-time availability of system resources.

## Powerful Integrations

The OpsWise Automation Center is deeply integrated with the operating systems where it runs - z/OS, Linux, UNIX, and Windows. For z/OS, OpsWise supports the step re-run and re-start features. On all platforms, OpsWise provides real-time file monitoring and file browsing.

The system also provides point-to-point transfer capabilities via FTP/SFTP. Database monitoring is also supported, along with database query and stored procedure execution.

## Integrated Role-based Security

System security is managed from within the product. Administrators add users and groups, then define and assign access permissions to the users and groups. These access permissions can be assigned at extremely granular levels, down to a specific task or groups of tasks if required.

## About OpsWise

Founded in 2005 and located in the heart of Silicon Valley, OpsWise's mission is to develop leading-edge IT Automated Operations solutions for the modern data center. OpsWise Software solutions simplify the management of the entire enterprise—from mainframes and servers in the data center to Windows and Linux on the desktop. All JME products are built on a service-oriented architecture (SOA), offer a common browser-based UI and real-time reporting.